

ARTICLE I

OWNER'S MANUAL



HERETIC
— L A B S —

TABLE OF CONTENTS

Important Safety Information	3
Getting to Know your ARTICLE I	4
Getting Started	5
General Use	6
Maintenance	8

Your ARTICLE I is backed by Wolverine Airsoft's limited warranty. Scan the QR code or visit www.wolverineairsoft.com/warranty to read our full warranty and register your ARTICLE I.



IMPORTANT SAFETY INFORMATION



Always wear safety goggles when using your Airsoft gun.
Portez toujours des lunettes de protection lorsque vous utilisez votre réplique. Utilice siempre gafas protectoras cuando emplee su réplica.



Select a safe place for operating the Airsoft gun. Avoid shooting in public places. Choisissez un endroit sûr pour utiliser votre réplique à billes, évitez les endroits publics. Escoga un lugar seguro para disparar la réplica. Evite lugares públicos.



Do not look directly into the gun barrel. Ne regardez pas directement dans le canon de votre réplique. No mire directamente hacia el canon de las réplicas.



Never shoot holding the Airsoft gun side-ways as the BB pellets will curve (this is due to the hop-up system). Ne tenez jamais la réplique de travers. Les billes peuvent partir à droite ou gauche. (Cela est dû au système de Hop-up). Jamás agarrar y disparar la réplica horizontalmente, por el sistema hop-up los proyectiles BB podrán cambiar de dirección en el aire.



Never aim or shoot at people or animals. Always set the selector on "safe" position (except when you are ready to shoot a target). Ne visiez et ne tirez jamais sur une personne ou un animal. Veuillez régler le sélecteur sur la position sécurité (excepté lorsque vous êtes prêt à tirer sur votre cible). Nunca apunte o dispare hacia personas o animales. Mantenga siempre el seguro en la posición "safe" hasta que este listo para disparar al blanco.



Do not disassemble gun yourself. Always contact your local retailer. Ne jamais démonter ou modifier votre réplique. Veuillez contacter votre revendeur d'airsoft pour toute question. No desarme la réplica usted mismo. Pongase siempre en contacto con el revendedor local.

Proper handling of your replica is critical to the safety and well being of yourself and those around you. When in doubt follow the Four Rules of Gun Safety:

1. Always treat every gun as if it was loaded.
2. Never point a gun at something you are not willing to destroy.
3. Keep your finger off the trigger until you have the weapon pointed at your target and are ready to shoot.
4. Be aware of the backdrop of your target. (i.e. what is behind your target in case you miss or the projectile over-penetrates).

Every day our rights continue to be restricted because people are irresponsible and abuse them. Please be part of the solution, not the problem. Learn your local laws, how your equipment works, how to use it safely, and always exercise responsibility.

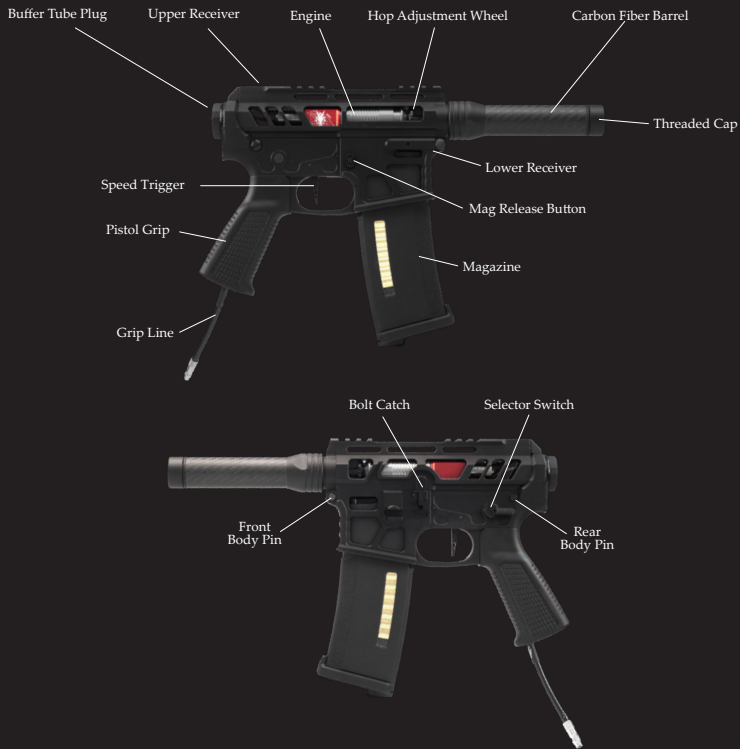
Always treat the airsoft gun as if it were loaded. Do not carry the airsoft gun in open view. Always transport the airsoft gun unloaded in a locked case. Do not openly brandish the airsoft gun, as this may be perceived by others (including law enforcement units) as a threat, and cause prompt reaction. Always use precision 6mm BBs for this airsoft gun. Never use any used or damaged BBs.

Manipulez toujours votre réplique comme si elle était chargée. Ne pas porter cette réplique sur vous en public. Transportez toujours la réplique déchargée, dans une mallette verrouillée. Ne pas ouvertement brandir votre réplique, car cela peut être perçu par d'autres (y compris les unités de police) comme une menace, et provoquer des troubles à l'ordre public. Veuillez toujours utiliser des billes de précision avec votre réplique à billes 6mm. N'utilisez jamais de billes déjà utilisées.

Siempre trate la réplica como si estuviera cargada. No lleve la réplica en vista pública. Transporte la réplica descargada, en una funda cerrada. No blandir la réplica abiertamente, ya que esto puede ser percibido por otras personas (incluso unidades de la policía) como una amenaza, y provocará una reacción instantánea. Utilice siempre BBs 6mm para su réplica. Nunca utilice BBs disparados o dañados.

GETTING TO KNOW YOUR ARTICLE I

Your Heretic Labs ARTICLE I is a precise instrument containing many individual components. Before you begin, please see the diagram below and familiarize yourself with each component.



IMPORTANT!

Your ARTICLE I contains steel components and is susceptible to surface rusting when exposed to moisture. If your ARTICLE I is exposed to liquids, be sure to dry it thoroughly and clean the surface with a silicone-based oil.

GETTING STARTED

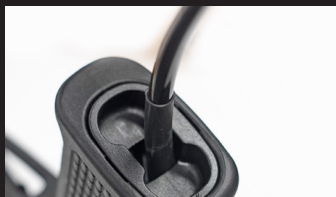
Use a screwdriver or other long tool to pry the pistol grip base plate loose from the pistol grip and remove it.



Pull the 2-pin JST RCY connector out from the grip and connect a 7.4 LiPo battery in the 250-500 mAh range. *Note: The battery will always draw current when connected, so your airsoft gun should not be stored with the battery connected.



Reinstall the pistol grip base plate. Note the correct orientation in the image and ensure the base plate snaps into place.



Mount your airsoft regulator to your tank and set the pressure to 100 PSI (see manufacturer's instructions). We recommend the STORM Category 5 regulator. Connect the tank air line by pulling down on the collar of the Foster fitting and pushing the male fitting into the female. *Note: Always carefully follow the tank manufacturer's instructions when filling and using HPA tanks. They are very safe when used properly, but when misused or abused, they can cause serious injury or death.

Load the magazine and insert it into the lower receiver until the mag catch clicks. We recommend 0.28g or higher BBs.

GENERAL USE

MODE SELECT

The selector switch can be used to toggle your ARTICLE I between Safe and two firing modes. (Semi/ Full Auto by default). You can switch the available firing modes by accessing the programming functions on the Control Board as described in the next section.



MODE PROGRAMMING

The Control Board can be cycled through five different fire modes as listed below. To advance to the next fire mode, set your gun to Semi mode and hold the trigger. After 5 seconds, the board will advance to the next setting.

Fire modes

1. Semi / Full Auto
(Default in US)
2. Semi / 3-Round Burst
3. Semi / 2-Round Burst
4. Semi / Semi
5. Semi / Binary



*ARTICLE I's sold in Germany are locked in Semi / Semi mode.

ADVANCED PROGRAMMING

To adjust advanced features Dwell / Rate of Fire/ etc, please see the Spartan Electronics Control Board Owner's Manual. (www.wolverineairsoft.com/documentation) The Heretic Control Board is based on the Spartan Electronics Control Board and is programmed in the same way.

HOP-UP ADJUSTMENT

The amount of hop-up can be adjusted with the adjustment wheel accessible through the ejection port on the right side. Rotating the wheel clockwise will increase the amount of hop-up.



RELOADING A MAGAZINE

Press the mag release button on the right side to eject a magazine. The ARTICLE I is designed for use with proprietary Wolverine Airsoft magazines with Empty Mag Detection (EMD). Note: Using third-party magazines may disable EMD.



EMPTY MAG DETECTION

In Simplified Mode (default), firing will be enabled automatically when your new magazine is inserted with no need to press the bolt catch.

You may alternatively wish to use Traditional Mode, which requires pressing the bolt catch to reset the empty mag detection and allow firing again.



You can switch between EMD modes by holding the bolt catch and trigger for 5 seconds.



MAINTENANCE

ENGINE/HOP-UP REMOVAL

Remove the front and rear body pins and separate the upper and lower receiver and disconnect the battery. Use a hard tool like an Allen wrench to carefully lever the feed tube assembly out of the upper receiver.



Gently pull straight up on the grip line to pull the contact yoke out of place. Then, use a hard tool like an Allen wrench to pull the contact yoke connector pin out of the engine.

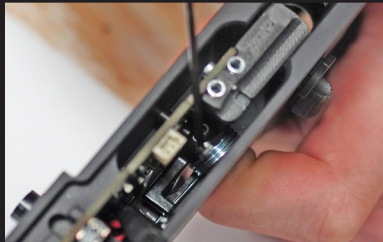


Feed the end of the grip line into the upper receiver and out the rear. Pull the airline straight out. It will bend sharply during this process but it will not be damaged.



CONTROL BOARD REMOVAL

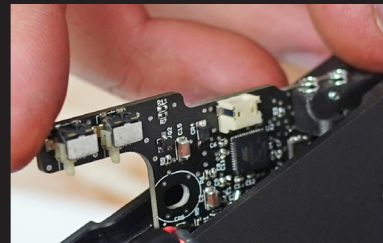
Remove the front and rear body pins and separate the upper and lower receiver and disconnect the battery. Use a hard tool like an Allen wrench to slide the trigger spring away from the control board/trigger board and relieve tension on the front trigger pin.



Use the Allen wrench to push the front trigger pin through the receiver and then pull it completely out.



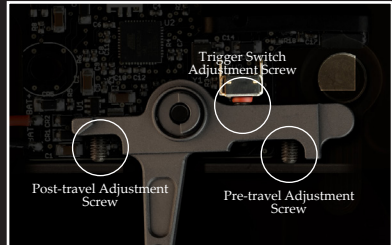
Finally, pull the control board/trigger board straight up from the receiver.



OPTIONAL 3-POINT SPEED TRIGGER ADJUSTMENT

The Heretic Speed Trigger includes three optional adjustment screws which can be used to adjust pre-travel, post-travel and the trigger switch activation. For detailed instructions, see the the video on the Heretic Labs Speed Trigger product page.

WARNING! *Improper adjustment can cause permanent damage to your board! Use caution!*



OPTIONAL RECEIVER TENSION SCREW

If you want a tighter fit of the upper and lower receivers, the optional receiver tension screw can be installed with a 1/8" allen wrench and adjusted to add tension to the upper receiver rear lug.



ADDITIONAL DOCUMENTATION

ELECTRONICS

The ARTICLE I Control board is based on the MTW Spartan Electronics Control Board. For more information, please see the owner's manual at www.wolverineairsoft.com/documentation



[Spartan
Electronics](#)

ENGINE

For help with maintaining your HPA engine, please see the particular owner's manual for your engine at <http://www.wolverineairsoft.com/documentation>



[INFERNO](#)

HOP-UP

For help with maintaining your hop-up, please see the particular owner's manual for your hop-up at <http://www.wolverineairsoft.com/documentation>



[MTW Poly/CNC
Hop-Up](#)

GUIDES, VIDEOS AND MORE...

You can find owner's manuals, maintenance guides, installation videos and more in the Knowledgebase at www.wolverineairsoft.com/knowledgebase





HERETIC
— L A B S —

www.hereticlabsairsoft.com